

# MIDI test suite

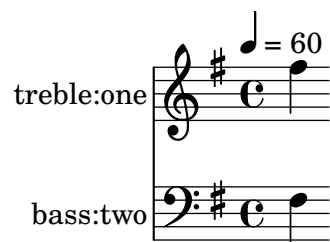
keys work in MIDI, this is d-minor

key-initial-midi.ly



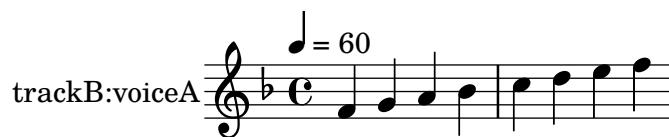
Midi2ly -key works on all staves, this is G major (-key=1)

key-option-all-staves-midi.ly



midi2ly's option --key works, this is F major.

key-option-midi.ly



Lyrics are preserved

lyrics-addlyrics-midi.ly



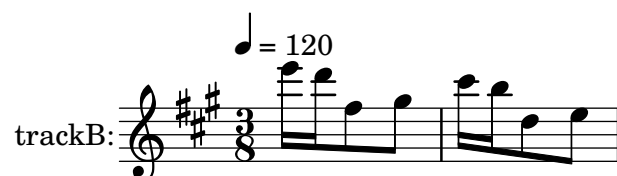
Partcombined music is preserved

partcombine-midi.ly

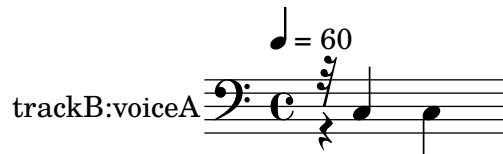


midi2ly's option --duration-quant preserves first note length (16).

quantize-duration-2-midi.ly



midi2ly's option `--duration-quant` quantizes durations of notes.  
`quantize-duration-midi.ly`



midi2ly's option `--start-quant` quantizes start of notes.  
`quantize-start-midi.ly`



LilyPond respects rests, also when there are dynamics  
`rest-dynamic-midi.ly`



midi2ly identifies rests  
`rest-midi.ly`



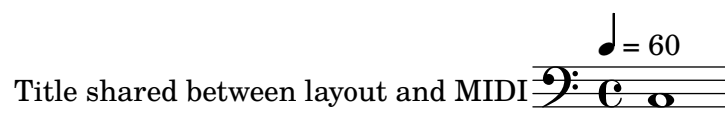
If a score has a `\header` block which defines a title, this title should override any title defined in a `\header` block of the score's enclosing `\bookpart` or `\book` (or a title defined in a top-level `\header` block) when naming the MIDI sequence generated from the score. Otherwise, if the score has no title defined, the MIDI sequence generated from the score should get named using the title defined in the `\header` block of the nearest enclosing `\bookpart`, `\book`, or top-level scope that contains a title definition.

`sequence-name-scoping-midi.ly`



The MIDI sequence generated from a score should get its name from the title defined in the score's `\header` block (if any). The title used for layout can be overridden for MIDI output by specifying a separate `midititle` in the `\header` block. If the score does not define a title of its own, and has no enclosing `\bookpart`, `\book`, or top-level scope with a `\header` block that defines a title, either, the MIDI sequence should get the default name.

`sequence-name-midi.ly`



Midi2ly remaps voices correctly to staves in MIDI-files that use instrument<->channel mapping when combined with voice<->track mapping. TODO: pianostaff

staff-map-instrument-midi.ly

Midi2ly remaps voices correctly to staves in MIDI-files that use voice<->channel mapping when combined with staff<->track mapping. TODO: pianostaff

staff-map-voice-midi.ly

midi2ly maps two voices nicely on one staff as \voiceOne, \voiceTwo

voice-2-midi.ly

midi2ly maps four voices nicely on one staff as \voiceOne, \voiceTwo, \voiceThree, \voiceFour

voice-4-midi.ly

midi2ly still produces output for a staff with five voices. However, in such cases, most probably the the correct \voiceOne, \voiceX... mapping is lost.

voice-5-midi.ly

trackB:voiceB

$\text{♩} = 60$

A musical score for a track labeled 'trackB:voiceB'. The score is written on a single staff with a treble clef and a common time signature (C). The tempo is indicated as quarter note = 60 (♩ = 60). The melody consists of four measures: the first measure has a dotted quarter note on G4, an eighth rest, and an eighth note on A4; the second measure has a quarter note on A4, an eighth rest, and an eighth note on B4; the third measure has a quarter note on B4, an eighth rest, and an eighth note on C5; the fourth measure has a quarter note on C5, an eighth rest, and an eighth note on B4. The bass line consists of four measures: the first measure has a half note on G3; the second measure has a half note on F3; the third measure has a half note on E3; the fourth measure has a whole note on D3.